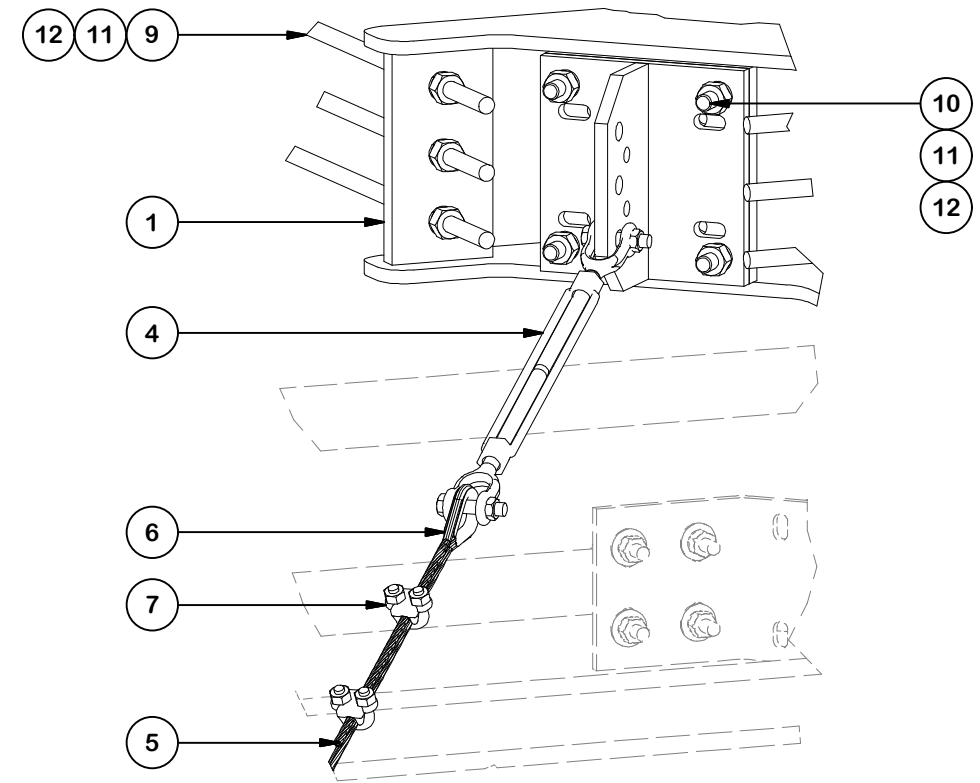
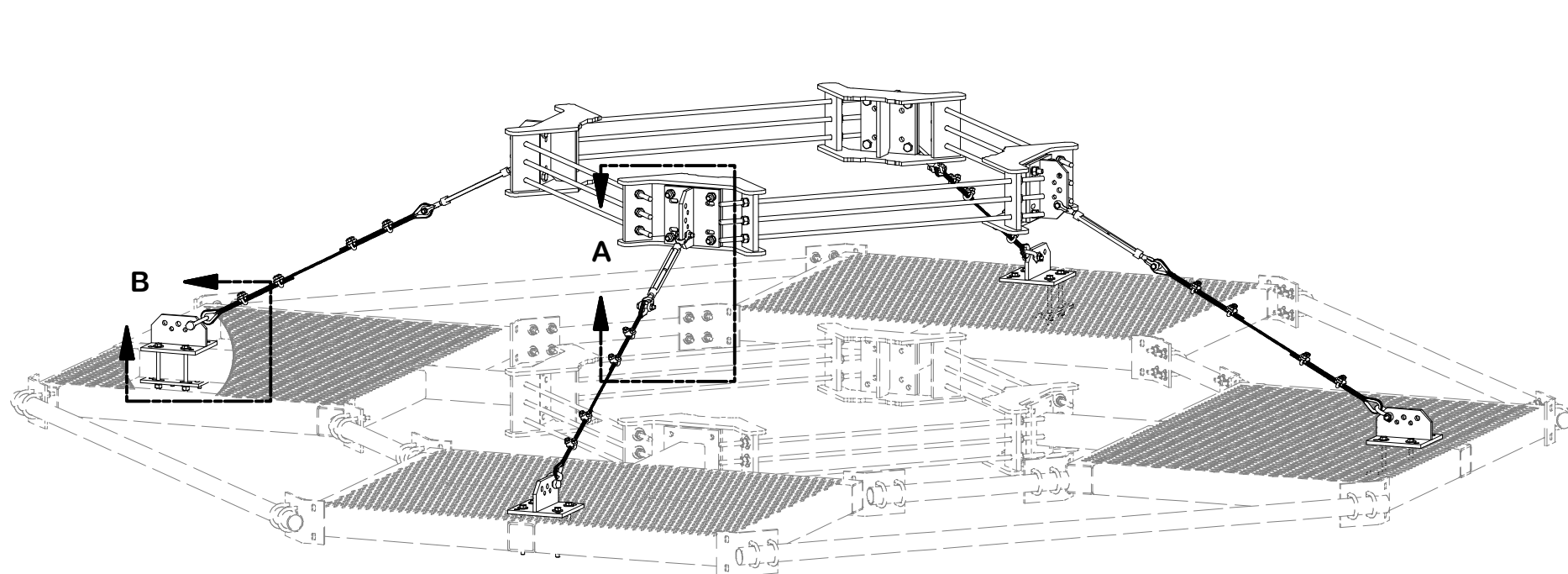


DETAIL B

PARTS LIST						
ITEM	QTY	PART NO.	PART DESCRIPTION	LENGTH	UNIT WT.	NET WT.
1	4	X-UQB4	QUAD BRACKET WELDMENT		61.57	246.27
2	8	X-TBW	T-BRACKET WELDMENT		13.60	108.80
3	4	SCX4	CROSSOVER PLATE	8 1/2 in	6.02	24.09
4	4	320601-I	5/8" TURNBUCKLE		2.63	10.53
5	4	AC516-10	5/16" AIRECRAFT CABLE		1.25	5.01
6	8	320777-I	5/16" THIMBLE		0.06	0.48
7	16	320152-I	5/16" WIRE ROPE CLIP		1.32	21.04
8	4	320751-I	1/2" CHAIN SHACKLE		0.76	3.05
9	12	G58R-24	5/8" x 24" THREADED ROD (HDG.)		2.09	25.09
9	12	G58R-48	5/8" x 48" THREADED ROD (HDG.)		4.18	50.18
10	16	G58234	5/8" UNC HEX BOLT (A325)	2 3/4 in	0.36	5.69
11	40	G58LW	5/8" HDG LOCKWASHER		0.03	1.04
12	40	G58NUT	5/8" HDG HEAVY 2H HEX NUT		0.13	5.20
13	16	G12065	1/2" x 6-1/2" HDG HEX BOLT GR5 FULL THREAD	5 1/2 in	0.41	6.55
14	32	G12FW	1/2" HDG USS FLATWASHER	3/32 in	0.03	1.09
15	16	G12LW	1/2" HDG LOCKWASHER	1/8 in	0.01	0.22
16	16	G12NUT	1/2" HDG HEAVY 2H HEX NUT		0.07	1.15
					TOTAL WT. #	515.48



DETAIL A

TOLERANCE NOTES

TOLERANCES ON DIMENSIONS, UNLESS OTHERWISE NOTED ARE:
SAWED, SHEARED AND GAS CUT EDGES ($\pm 0.030"$)
DRILLED AND GAS CUT HOLES ($\pm 0.030"$) - NO CONING OF HOLES
LASER CUT EDGES AND HOLES ($\pm 0.010"$) - NO CONING OF HOLES
BENDS ARE $\pm 1/2$ DEGREE
ALL OTHER MACHINING ($\pm 0.030"$)
ALL OTHER ASSEMBLY ($\pm 0.060"$)

PROPRIETARY NOTE:
THE DATA AND TECHNIQUES CONTAINED IN THIS DRAWING ARE PROPRIETARY INFORMATION OF VALMONT INDUSTRIES AND CONSIDERED A TRADE SECRET. ANY USE OR DISCLOSURE WITHOUT THE CONSENT OF VALMONT INDUSTRIES IS STRICTLY PROHIBITED.

DESCRIPTION
**UNIVERSAL CABLE REINFORCEMENT KIT
4 SECTORS**

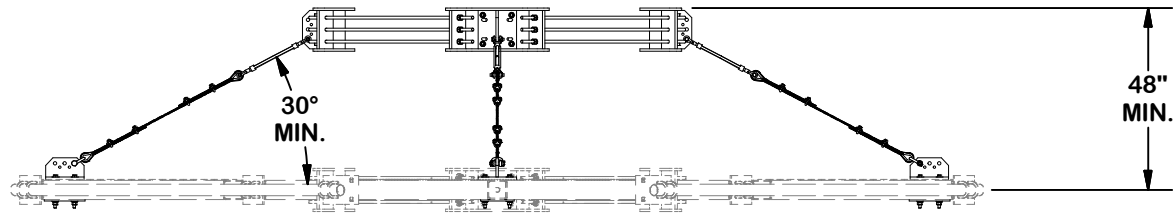
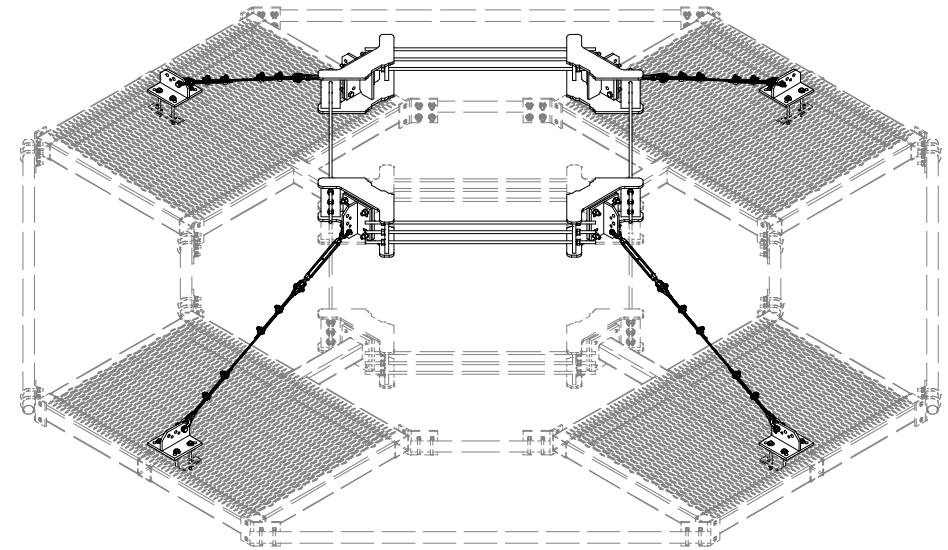
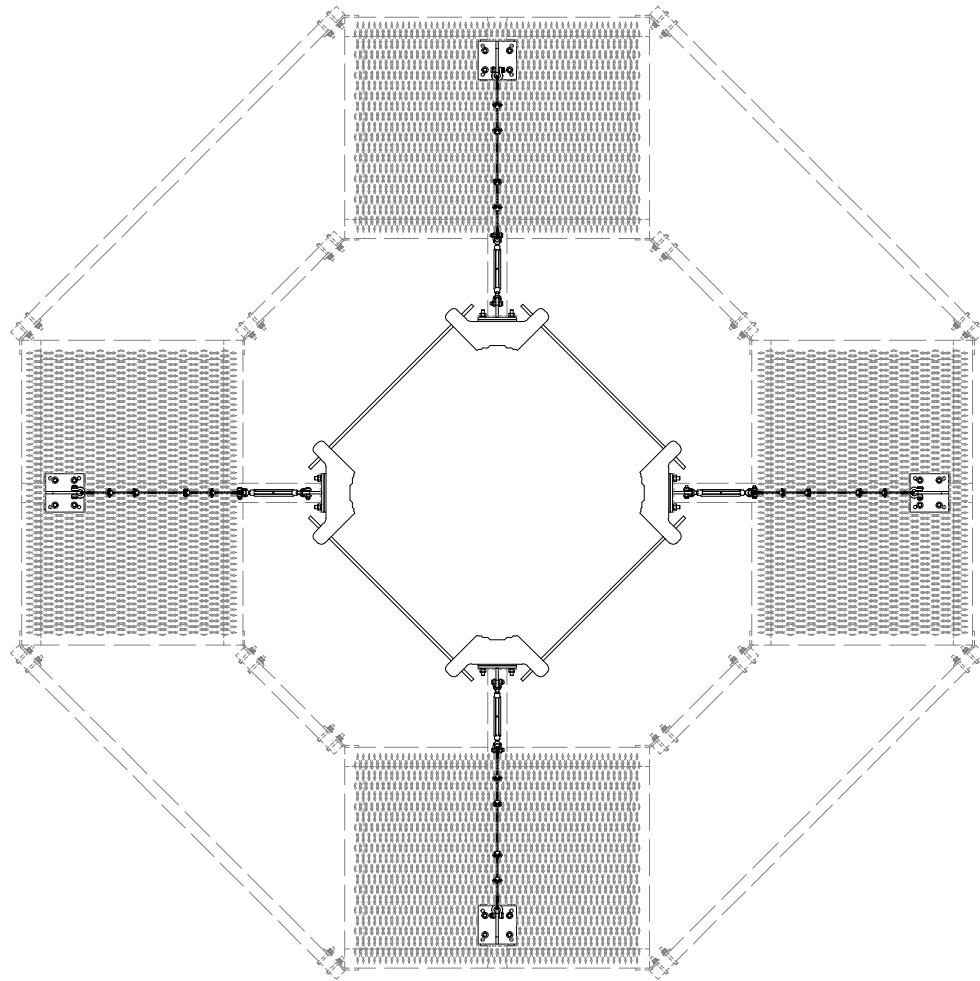
CPD NO.	DRAWN BY	ENG. APPROVAL
SP1	CSL 12/3/2018	12/4/2018
CLASS	DRAWING USAGE	CHECKED BY
87	SHOP	BMC 12/4/2018

SITE PRO 1
A valmont COMPANY

Engineering Support Team:
1-888-753-7446

Locations:
New York, NY
Atlanta, GA
Los Angeles, CA
Plymouth, IN
Salem, OR
Dallas, TX

PART NO.	CRK-UC4	PAGE 1 OF 2
DWG. NO.	CRK-UC4	



TOLERANCE NOTES

TOLERANCES ON DIMENSIONS, UNLESS OTHERWISE NOTED ARE:
SAWED, SHEARED AND GAS CUT EDGES ($\pm 0.030''$)
DRILLED AND GAS CUT HOLES ($\pm 0.030''$) - NO CONING OF HOLES
LASER CUT EDGES AND HOLES ($\pm 0.010''$) - NO CONING OF HOLES
BENDS ARE $\pm 1/2$ DEGREE
ALL OTHER MACHINING ($\pm 0.030''$)
ALL OTHER ASSEMBLY ($\pm 0.060''$)

PROPRIETARY NOTE:
THE DATA AND TECHNIQUES CONTAINED IN THIS DRAWING ARE PROPRIETARY INFORMATION OF VALMONT INDUSTRIES AND CONSIDERED A TRADE SECRET. ANY USE OR DISCLOSURE WITHOUT THE CONSENT OF VALMONT INDUSTRIES IS STRICTLY PROHIBITED.

DESCRIPTION			
UNIVERSAL CABLE REINFORCEMENT KIT 4 SECTORS			

CPD NO. SP1		DRAWN BY CSL 12/3/2018		ENG. APPROVAL 12/4/2018	
CLASS 87	SUB 02	DRAWING USAGE SHOP		CHECKED BY BMC 12/4/2018	

SITE PRO 1 A valmont COMPANY	Locations: New York, NY Atlanta, GA Los Angeles, CA Plymouth, IN Salem, OR Dallas, TX	
	Engineering Support Team: 1-888-753-7446	

PART NO.	CRK-UC4	2 OF 2 PAGE
DWG. NO.	CRK-UC4	